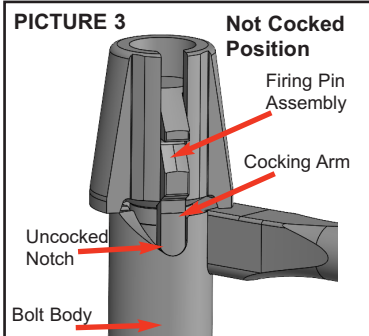
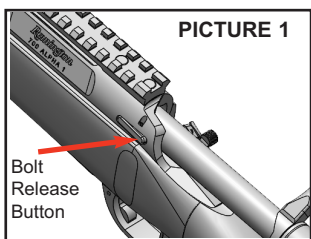


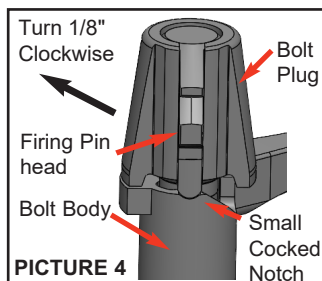
To Remove the Bolt Assembly:

1. Always keep the firearm pointed in a safe direction.
2. Engage the safety mechanism by moving the safety arm fully rearward to the "SAFE" or "S" position.
3. Keep fingers and other obstructions away from the trigger
4. Open the action by raising the bolt handle.
5. Look into the ejection port, visually check the chamber and magazine to make sure the firearm is completely unloaded.
6. Disengage the bolt stop by pushing the bolt release button while sliding the bolt assembly rearward until it is clear of the receiver. See Picture 1 on insert.



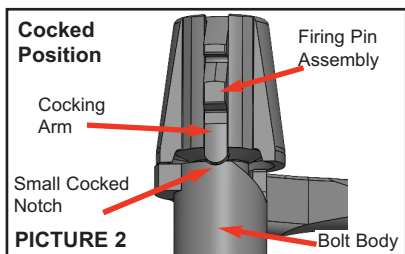
To Disassemble the Bolt Assembly:

1. With the bolt assembly removed from the firearm, (see "To Remove the Bolt Assembly"), compress the firing pin spring by hand or by placing pliers on the firing pin head and bolt plug. If pliers are used be sure to take precautions not to mar the bolt plug.
2. Rotate the bolt plug and firing pin assembly clockwise 1/8th of a turn. See Picture 4
3. Remove the firing pin assembly from the bolt body by pulling the bolt plug outward.



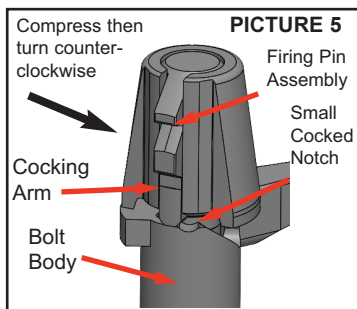
To Install the Bolt Assembly:

1. Always keep the firearm pointed in a safe direction.
2. Engage the safety mechanism by moving the safety arm fully rearward to the "SAFE" or "S" position.
3. Before inserting the bolt assembly into the receiver, make sure the firing pin assembly is cocked. When cocked, the firing pin cocking arm will be located in the small cocked notch. See Picture 2.
4. If the firing pin assembly is NOT cocked (as shown in Picture 3), cock the assembly by holding the bolt body steady while turning the firing pin assembly clockwise until the cocking arm is resting in the small cocked notch as in Picture 2.
5. With the bolt handle to the shooter's right, align the bolt lugs with the receiver's lug cuts then slide the bolt assembly forward.
6. Push the bolt assembly forward until the bolt stop is engaged and the bolt assembly is locked into the receiver.



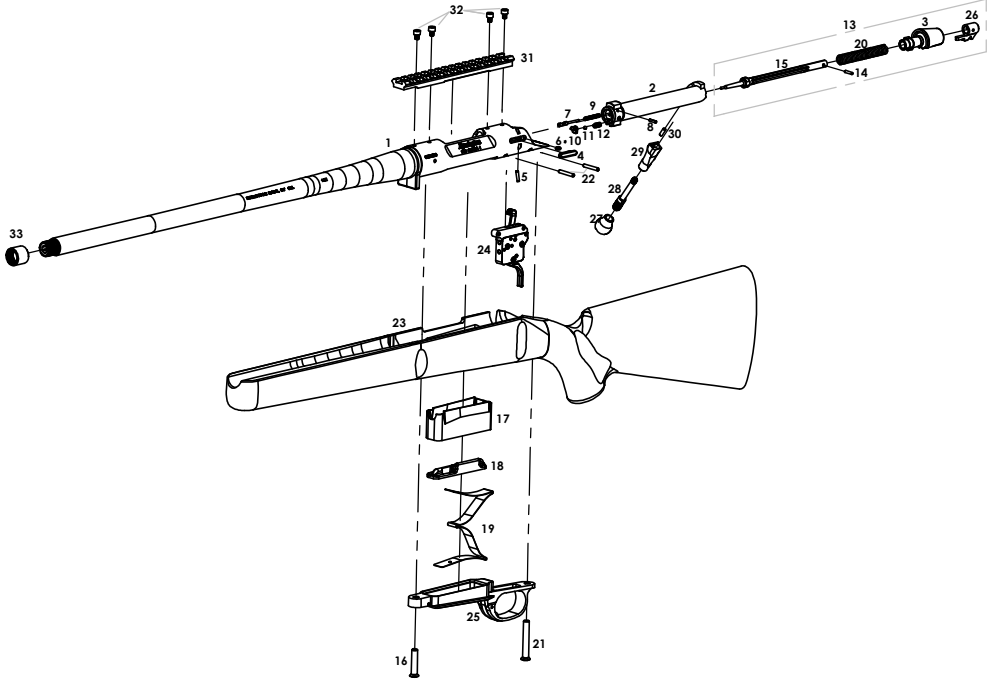
To Reassemble Bolt Assembly:

1. Insert the firing pin assembly in the bolt body, with the firing pin head approximately 1/8 of a turn clockwise from the small cocked notch. See Picture 5
2. Compress the bolt plug, then rotate 1/8 turn counter-clockwise until the cocking arm is located in the small cocked notch. See Picture 5



MODEL 700A1™

Bolt Action Centerfire Rifle



PARTS LIST

VIEW PART NAME

#

1. Barrel Assembly
2. Bolt
3. Bolt Plug
4. Bolt Stop
5. Bolt Stop Pin
6. Bolt Stop Spring
7. Ejector
8. Ejector Pin
9. Ejector Spring
10. Extractor
11. Extractor Ball Detent
12. Extractor Spring
13. Firing Pin Assembly
14. Firing Pin Cros Pin
15. Firing Pin
16. Front Guard Screw
17. Magazine

VIEW PART NAME

#

18. Magazine Follower
19. Magazine Spring
20. Main Spring
21. Rear Guard Screw
22. Sear Pin
23. Stock Assembly
24. Trigger Assembly
25. Trigger Guard
26. Firing Pin Head
27. Bolt Handle Knob
28. Bolt Handle Bolt
29. Bolt Handle Sleeve
30. Bolt Handle Pin
31. Rail
32. Rail Screw
33. Thread Protector